

NEW HARDSCAPE SHADING (20% WITHIN 15 YEARS)			
TREES	*100%	*75%	*50%
30'-35' ULMUS & ZELKOVA	00 (962) = 0900 S.F.	6 (721) = 4,326 S.F.	4 (481) = 1,924 S.F.
20'-25' ACER B. & ACER P.	3 (491) = 1,473 S.F.	2 (368) = 736 S.F.	4 (246) = 984 S.F.
15' CERCIS	00 (314) = 0900 S.F.	2 (236) = 472 S.F.	5 (157) = 785 S.F.
<b>SUB-TOTALS</b>	<b>1,473 S.F.</b>	<b>5,534 S.F.</b>	<b>3,693 S.F.</b>
TOTAL NEW HARDSCAPE AREA = 26,683 S.F. (20% = 5,337)			
TOTAL SHADED AREA = 10,700 S.F.			
PERCENTAGE OF SHADE = 40.1%			
*ROOFING AREA NOT INCLUDED IN THE TOTAL AREA CALCULATION: 6,470 S.F.			

\*NOTE: ROOFING MATERIAL (TPO) MEETS THE MINIMUM SOLAR REFLECTANCE INDEX REQUIRED BY THE CALIFORNIA GREEN BUILDING CODE. REFER TO TABLE A5.106.11.2.2 IN APPENDIX A5 OF THE CALIFORNIA GREEN BUILDING CODE.

NEW SOFTSCAPE SHADING (20% WITHIN 15 YEARS)			
TREES	100%	100%	100%
30'-35' ULMUS & ZELKOVA	10 (962) = 9,620 S.F.	00 (721) = 0000 S.F.	
20'-25' ACER B. & ACER P.	12 (491) = 5,892 S.F.	00 (246) = 0000 S.F.	
15' CERCIS	7 (314) = 2,198 S.F.	00 (157) = 0000 S.F.	
<b>SUB-TOTALS</b>	<b>17,710 S.F.</b>	<b>0000 S.F.</b>	
TOTAL LANDSCAPED AREA = 12,218 S.F. (20% = 2,444 S.F.)			
TOTAL SHADED AREA = 17,710 S.F.			
PERCENTAGE OF SHADE = 144.9%			
*ROOFING AREA NOT INCLUDED IN THE TOTAL AREA CALCULATION: 280 S.F.			

\*NOTE: ROOFING MATERIAL (TPO) MEETS THE MINIMUM SOLAR REFLECTANCE INDEX REQUIRED BY THE CALIFORNIA GREEN BUILDING CODE. REFER TO TABLE A5.106.11.2.2 IN APPENDIX A5 OF THE CALIFORNIA GREEN BUILDING CODE.

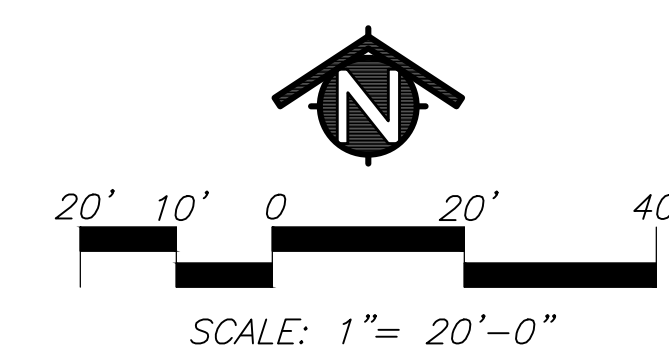
KEY	TREE LEGEND
	TREES - NOT ALL SYMBOLS SHOWN WITH TREE SHADING CANOPY PERCENTAGE
	NEW SOFTSCAPE SHADING
	NEW HARDSCAPE SHADING
	ROOT BARRIER, INSTALL WHERE SHOWN ON PLANS SEE DETAIL L4.1-2
	PLANT QUANTITY
	PLANT KEY
	AREA USED AS 'TOTAL NEW HARDSCAPE AREA' 21,691 SQUARE FEET
	AREA USED AS 'TOTAL NEW SOFTSCAPE AREA' 13,962 SQUARE FEET

TREE MATERIAL LIST

SIZE	QUANTITY	KEY	BOTANICAL NAME ... COMMON NAME
TREES:			
24" BOX	5	ACE.B.	ACER BUERGERIANUM ... TRIDENT MAPLE
24" BOX	3	ACE.P.	ACER PALMATUM 'SANGO KAKI' ... CORAL BARK MAPLE
24" BOX	6	CER.	CERCIS CANADENSIS 'OKLAHOMA' ... OKLAHOMA EASTERN REDBUD
24" BOX	8	ULM.	ULMUS WILSONIA 'PROSPECTOR' ... PROSPECTOR ELM
24" BOX	2	ZEL.	ZELKOVA SERRATA 'VILLAGE GREEN' ... JAPANESE ZELKOVA

I HAVE COMPLIED WITH THE CRITERIA OF THE ORDINANCE AND APPLIED THEM ACCORDINGLY FOR EFFICIENT USE OF WATER IN THE IRRIGATION DESIGN PLAN.

*Bryan Hollis Walker*  
LANDSCAPE ARCHITECT  
3/4/21  
DATE



IDENTIFICATION STAMP  
DIV. OF THE STATE ARCHITECT  
APP: 02-118738 INC.  
REVIEWED FOR  
SS  FLS  ACS   
DATE: 03/16/2021



HMC Architects

3447024000

2495 NATOMAS PARK DRIVE, STUDIO 100  
SACRAMENTO, CA 95833  
T 916 325 1100 / www.hmcarchitects.com

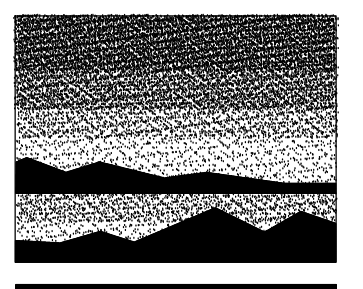
ISSUED DATE

Keynotes:

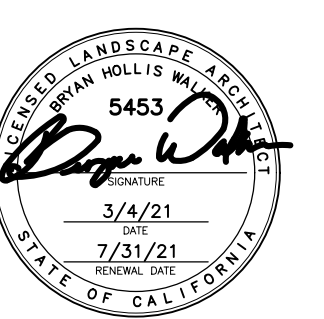
Legend:

Consultant:

19-36



**MTW group**  
LANDSCAPE ARCHITECTURE  
AND PLANNING  
2707 K Street, Suite 201  
Sacramento, CA 95816  
916.369.3990



Bryan Hollis Walker C-5453

Notes:

Facility:  
**CESAR CHAVEZ ELEMENTARY SCHOOL**  
DAVIS JOINT UNIFIED SCHOOL DISTRICT  
1221 ANDERSON RD, DAVIS, CA 95616

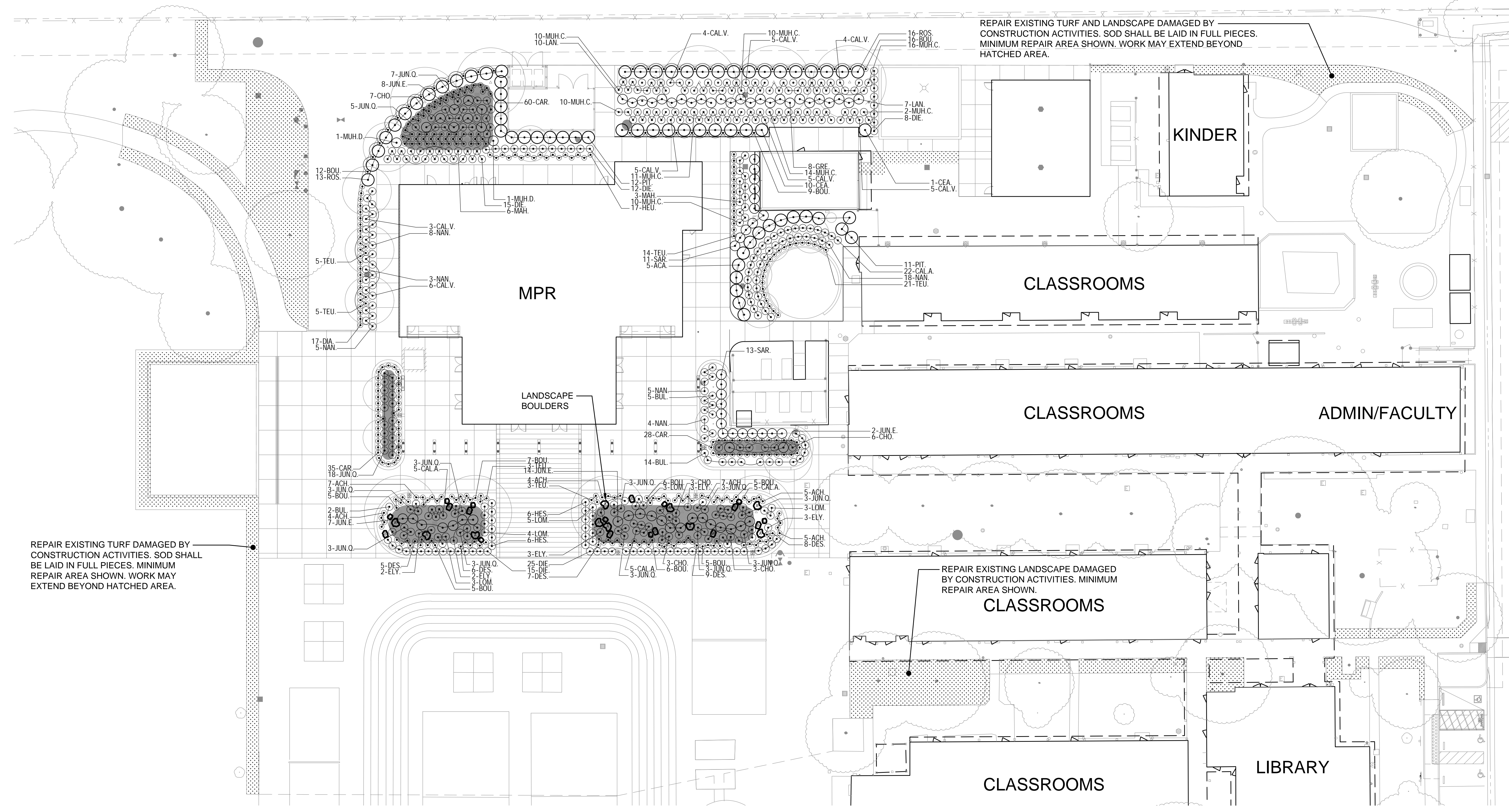
Project:  
**NEW MULTI-PURPOSE BUILDING AT CESAR CHAVEZ ES**

Sheet:  
**SHRUB PLANTING PLAN**

**CONSTRUCTION DOCUMENTS**

Date: 3-5-2021 Client Project No.: 3447024000  
Sheet:

L2.1



REPAIR EXISTING TURF DAMAGED BY CONSTRUCTION ACTIVITIES. SOD SHALL BE LAID IN FULL PIECES. MINIMUM REPAIR AREA SHOWN. WORK MAY EXTEND BEYOND HATCHED AREA.

REPAIR EXISTING LANDSCAPE DAMAGED BY CONSTRUCTION ACTIVITIES. MINIMUM REPAIR AREA SHOWN.

KEY	LANDSCAPE LEGEND
	TREE OUTLINE FOR REFERENCE
	SHRUBS
	LANDSCAPE BOULDERS SEE L4.1-5 FOR INSTALLATION
	PLANT QUANTITY
	PLANT KEY
	EXISTING TURF OR LANDSCAPE TO BE REPAIRED

**PLANT MATERIAL LIST**

WATER USE	SIZE	QTY.	KEY	SIZE	BOTANICAL NAME ... COMMON NAME
				HxW	SHRUBS:
LOW	5 G.C.	5	ACA	3X5	ACACIA COGNATA 'COUSIN ITT' ... COUSIN ITT RIVER WATTLE
LOW	1 G.C.	76	BOU	2X2	BOUTELOA GRACILIS BLONDE AMBITION ... BLONDE AMBITION GAMMA GRASS
LOW	1 G.C.	21	BUL	2X3	BULBINE FRUTESCENS HALLMARK ... ORANGE STALKED BULBINE
LOW	5 G.C.	37	CAL.A	3X3	CALAMAGROSTIS X ACUTIFLORA KARL FOERSTER ... FEATHER REED GRASS
LOW	5 G.C.	37	CAL.V	3X4	CALLISTEMON UMINALIS LITTLE JOHN ... DWARF BUTTLE BRUSH
LOW	5 G.C.	11	CEA	1X5	CEANOTHUS GRESEYI DIAMOND HEIGHTS ... DIAMOND HEIGHTS CEANOTHUS
MEDIUM	5 G.C.	10	COR	3X3	CORNUS SERICEA 'KELSEY' ... KELSEY'S DWARF RED-OSIER DOGWOOD
MEDIUM	1 G.C.	25	DES	2X2	DESCHAMPSIA CEPTOSA ... TUFTED HAIR GRASS
LOW	5 G.C.	17	DIA	2X2	DIANELLA REVOLUTA 'COOLVISTA' ... COOLVISTA DIANELLA
LOW	5 G.C.	75	DIE	5X3	DIESEL'S GRANDIFLORA VAREGATA ... STRIPED FORTNIGHT LILY
LOW	5 G.C.	13	ELY	3X3	ELYMUS CONDENSATUS 'CANYON PRINCE' ... CANYON PRINCE ELYMUS
LOW	5 G.C.	31	ERI	2X4	ERIGERON KARVINSKIANUS ... SANTA BARBARA DAISY
LOW	5 G.C.	8	GRE	4X5	GREVILLEA X NOELII ... NOELI GREVILLEA
LOW	5 G.C.	12	HES	2X3	HESPERALOE PARVIFLORA 'BRAKELIGHTS' ... BRAKELIGHTS RED YUCCA
LOW	5 G.C.	17	HEU	2X2	HEUCHERA X 'PLUM PUDDING' ... PLUM PUDDING CORAL BELLS
LOW	5 G.C.	17	LAN	2X4	LANTANA CAMARA 'NEW GOLD' ... NEW GOLD LANTANA
LOW	5 G.C.	9	MAH	3X4	MAHONIA EURYBRACTEATA 'SOFT CARESS' ... SOFT CARESS MAHONIA
LOW	5 G.C.	83	MUH.C	3X3	MUHLENBERGIA CAPILLARIS ... PINK MUHLY
LOW	5 G.C.	23	MUH.D	4X4	MUHLENBERGIA DUBIA ... PINE MUHLY
LOW	5 G.C.	43	NAN	4X3	NANUKA DOMESTICA 'GULF STREAM' ... GULF STREAM HEAVENLY BAMBOO
LOW	5 G.C.	23	PIT	8X5	PITTIOSPORUM TENUIFOLIUM 'SILVER SHEEN' ... SILVER SHEEN PITTIOSPORUM
LOW	5 G.C.	31	ROS	2X5	ROSMARIANUS OFFICINALIS 'INGRAMI' ... INGRAMI BEAUTY ROSEMARY
LOW	15 G.C.	24	SAR	4X4	SARCOCOCOA RUSCIFOLIA ... FRAGRANT SWEET BOX
LOW	1 G.C.	51	TEU	1X2	TEUCRIUM CHAMAEDRYS ... WALL GERMANDER
					BIO-RETENTION PLANTS:
LOW	1 G.C.	32	ACH	2X2	ACHILLEA MILLEFOLIUM 'MOONSHINE' ... MOONSHINE YARROW
MEDIUM	1 G.C.	123	CAR	2X2	CAREX TESTACEA 'PRAIRIE FIRE' ... PRAIRIE FIRE CAREX
MEDIUM	5 G.C.	10	CHO	3X3	CHONDROPOetalum TESTIFORM ... SMALL CAPE BUSH
MEDIUM	5 G.C.	60	JUN	3X3	JUNCEUS EFFUSUS 'QUARTZ CREEK' ... QUARTZ CREEK SEDGE
LOW	1 G.C.	18	LOM	3X3	LOMANDRA LONGIFOLIA 'BREEZE' ... DWARF MAT RUSH

**GENERAL LANDSCAPE REQUIREMENTS/NOTES**

- NO PLANTING SHALL BE STARTED UNTIL SPRINKLER IRRIGATION SYSTEM HAS BEEN TESTED BY CONTRACTOR IN PRESENCE OF OWNER'S REPRESENTATIVE AND NOTED DEFICIENCIES CORRECTED.
- NO PLANTING SHALL BE STARTED UNTIL SOIL PREPARATION AND FINISH GRADING OPERATIONS HAVE BEEN COMPLETED AND APPROVED BY THE OWNER'S REPRESENTATIVE.
- QUANTITIES SHOWN ON PLANT MATERIAL LIST ARE APPROXIMATE. PROVIDE QUANTITIES INDICATED ON LANDSCAPE PLAN.
- PLANT MATERIAL IS SUBJECT TO APPROVAL OF OWNER'S REPRESENTATIVE.
- SEE SHEET L4.1 FOR PLANTING INSTALLATION DETAILS.

**ENVIRONMENTAL REQUIREMENTS:**  
GENERAL: PROCEED WITH WORK IN ORDERLY AND TIMELY MANNER TO COMPLETE INSTALLATION OF LANDSCAPING WITHIN CONTRACT LIMITS.

**PROTECTION:**  
EXISTING CONSTRUCTION: EXECUTE WORK IN AN ORDERLY AND CAREFUL MANNER TO PROTECT NEW CONCRETE WALKS, WORK OF OTHER TRADES, AND OTHER IMPROVEMENTS.

EXISTING UTILITIES: DETERMINE LOCATION OF UNDERGROUND UTILITIES AND PERFORM WORK IN A MANNER WHICH WILL AVOID POSSIBLE DAMAGE. HAND EXCAVATE AS REQUIRED TO MINIMIZE POSSIBILITY OF DAMAGE TO UNDERGROUND UTILITIES. MAINTAIN GRADE STAKES SET BY OTHERS UNTIL REMOVAL IS MUTUALLY AGREED UPON BY ALL PARTIES CONCERNED. BE RESPONSIBLE FOR PROTECTION OF EXISTING UTILITIES WITHIN CONSTRUCTION AREA. REPAIR DAMAGE TO UTILITIES THAT OCCUR AS A RESULT OF OPERATIONS OF THIS WORK.

LANDSCAPING: PROTECT LANDSCAPE WORK AND MATERIALS FROM DAMAGE DUE TO LANDSCAPE OPERATIONS, OPERATIONS BY OTHER CONTRACTORS AND TRADES AND THE PASSERS. MAINTAIN PROTECTION DURING INSTALLATION AND MAINTENANCE PERIODS. TREAT, REPAIR OR REPLACE DAMAGED LANDSCAPE WORK AS DIRECTED AT NO ADDITIONAL COST TO CONTRACTOR.

ADVERSE CONDITIONS: WHEN CONDITIONS DETRIMENTAL TO SOD OR PLANT GROWTH ARE ENCOUNTERED, SUCH AS RUBBLE FILL, ADVERSE DRAINAGE CONDITIONS, OR OBSTRUCTIONS, NOTIFY OWNER'S REPRESENTATIVE BEFORE STARTING WORK.

**PLANTING INSTALLATION SEASONS AND CONDITIONS**  
NO WORK SHALL BE DONE WHEN GROUND IS FROZEN, SNOW COVERED, TOO WET OR IN AN OTHERWISE UNSUITABLE CONDITION FOR AMENDING SOIL, FINISH GRADING OR PLANTING.

**SOIL TESTING/SOIL IMPROVEMENT:**  
SEE SPECIFICATIONS 32 90 00, SECTION 3.02 SOIL TESTING AND SECTION 3.03 PREPARATION.

**SOIL PERCOLATION**  
EXCAVATE ALL TREE PITS. FILL EXCAVATED TREE PITS WITH WATER TO 1/2 DEPTH OF PIT. INSPECTOR IMMEDIATELY SHOULD DRAIN WITHIN 4 HOURS. IF PLANTING PITS DO NOT DRAIN, NOTIFY PLANTING SHALL NOT BE STARTED UNTIL OWNER'S REPRESENTATIVE HAS RESOLVED A METHOD TO REMEDY DRAINAGE ISSUE.

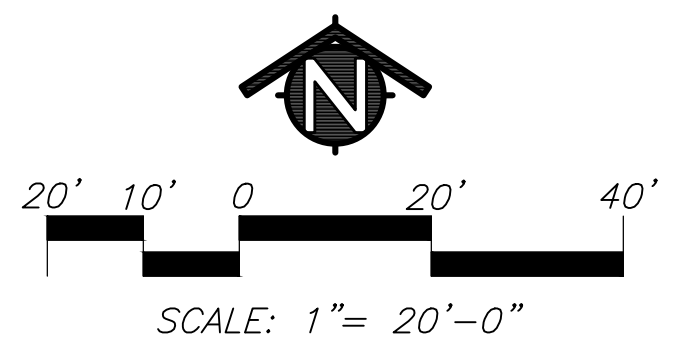
**PLANT MATERIAL STANDARDS**  
PLANTS SHALL BE IN ACCORDANCE WITH AMERICAN NATIONAL STANDARDS INSTITUTE (ANSI) ANSI Z60.1- AMERICAN STANDARD FOR NURSERY STOCK EXCEPT AS OTHERWISE STATED IN SPECIFICATIONS OR SHOWN ON DRAWINGS. WHERE DRAWINGS OR SPECIFICATIONS ARE IN CONFLICT WITH ANSI Z60.1 DRAWINGS AND SPECIFICATIONS SHALL PREVAIL. PRUNE, THIN OUT AND SHAPE TREES IN ACCORDANCE WITH ANSI STANDARD HORTICULTURAL PRACTICE. PRUNE TREES TO RETAIN REQUIRED HEIGHT AND SPREAD UNLESS OTHERWISE DIRECTED BY LANDSCAPE ARCHITECT. DO NOT CUT TREE LEADERS, AND REMOVE ONLY INJURED OR DEAD BRANCHES FROM FLOWERING TREES.

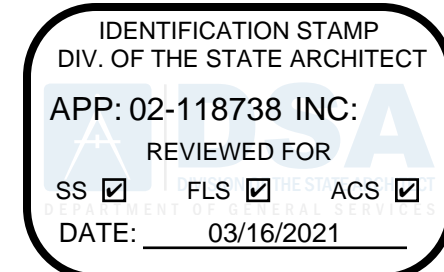
**EXISTING LANDSCAPE AND SPRINKLER IRRIGATION SYSTEM**  
WORK LIMITS OF THIS PROJECT EXTEND INTO AREAS THAT WERE PREVIOUSLY DEVELOPED UNDER OTHER CONTRACTS. PRIOR TO START OF WORK, CONTRACTOR SHALL MEET WITH OWNER'S REPRESENTATIVE TO LOCATE ALL CONNECTIONS CALLED FOR ON DRAWINGS. WORK LIMITS/FENCING SHALL BE LAID OUT BY CONTRACTOR AND VERIFIED BY OWNER'S REPRESENTATIVE. FENCE TO BE INSTALLED AND IRRIGATION SYSTEM SHALL BE TESTED WITH CONTRACTOR, INSPECTOR AND OWNER'S REPRESENTATIVE PRESENT. DEFICIENCIES SHALL BE NOTED AT THIS TIME AND ARE THE RESPONSIBILITY OF OWNER. AT COMPLETION OF WORK, SYSTEM WILL AGAIN BE TESTED. DEFICIENCIES NOTED AT THIS TIME THAT WERE NOT NOTED PREVIOUSLY WILL BE RESPONSIBILITY OF CONTRACTOR. EXISTING LANDSCAPE THAT HAS BEEN DAMAGED DUE TO CONSTRUCTION SHALL BE RESTORED TO ORIGINAL CONDITION BY CONTRACTOR AT NO ADDITIONAL COST TO OWNER. PRIOR TO MAKING ANY CONNECTION TO MAIN LINE, CONTRACTOR SHALL NOTIFY OWNER 1 WEEK IN ADVANCE SO ADJUSTMENTS TO EXISTING WATERING PROGRAMS CAN BE MADE.

I HAVE COMPLIED WITH THE CRITERIA OF THE ORDINANCE AND APPLIED THEM ACCORDINGLY FOR EFFICIENT USE OF WATER IN THE IRRIGATION DESIGN PLAN.

*Bryan Walker*  
LANDSCAPE ARCHITECT

3/4/21  
DATE

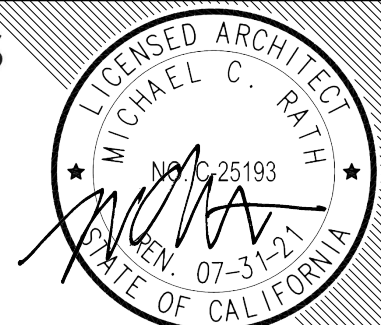




HMC Architects

3447024000

2495 Natomas Park Drive, Studio 100  
Sacramento, CA 95833  
T 916.326.1100 / www.hmcarchitects.com



ISSUED DATE

- Keynotes:**
- 02.17 (E) PARKING LOT
  - 02.59 (E) BACKFLOW PREVENTER
  - 02.50 (E) CONCRETE BOLLARD TO REMAIN
  - 02.54 (E) SWING BARRIER GATE
  - 22.17 FIRE HYDRANT; PROVIDE ASSEMBLY PER CIVIL DWGS
  - 22.18 PROVIDE FIRE DEPARTMENT CONNECTION PER CIVIL DWGS
  - 32.19 PIPE BOLLARD - SEE CIVIL DWGS
  - 32.31 ACCESSIBLE TOW AWAY SIGN TO READ "UNAUTHORIZED VEHICLES PARKED IN DESIGNATED ACCESSIBLE SPACES NOT DISPLAYING DISTINGUISHING PLACARDS OR SPECIAL LICENSE PLATES ISSUED FOR PERSONS WITH DISABILITIES WILL BE TOWED AWAY AT THE OWNER'S EXPENSE - 2/A1.31
  - 32.35 AUTHORIZED VEHICLES ONLY SIGN - 6/A1.31
  - 32.42 NEW STRIPING TO MATCH EXISTING

- Legend:**
- [Solid Grey Box] SCOPE OF WORK
  - [Thin Black Line] (E) BUILDING
  - [Cross-hatched Box] FIRE LANE
  - [Dotted Box] (E) SITE CONDITIONS, SEE CIVIL DWGS
  - [Stippled Box] (N) ASPHALT PAVING, SEE CIVIL DWGS
  - [Dotted Box] (N) CONCRETE PAVING, SEE CIVIL DWGS
  - [Dotted Box] (N) LANDSCAPING, SEE LANDSCAPE DWGS
  - [Dashed Line] PROPERTY LINE
  - [Dashed Line] PATH OF EGRESS
  - [Dashed Line] STRUCTURE OVERHEAD
  - [Dotted Line] PAINTED RED STRIPING/CURB WITH "NO PARKING - FIRE LANE" TEXT

- Notes:**
1. REFER TO SHEET G0.11 FOR TYPICAL SYMBOLS AND ABBREVIATIONS
  2. SEE CIVIL PLANS FOR PAVING, STRIPING AND SIGNAGE.
  3. SEE A1.11 FOR GATE SCHEDULE.

**Facility:**  
CESAR CHAVEZ ELEMENTARY SCHOOL  
DAVIS JOINT UNIFIED SCHOOL DISTRICT  
1221 ANDERSON RD, DAVIS, CA 95616

**Project:**  
NEW MULTI-PURPOSE BUILDING AT CESAR CHAVEZ ES

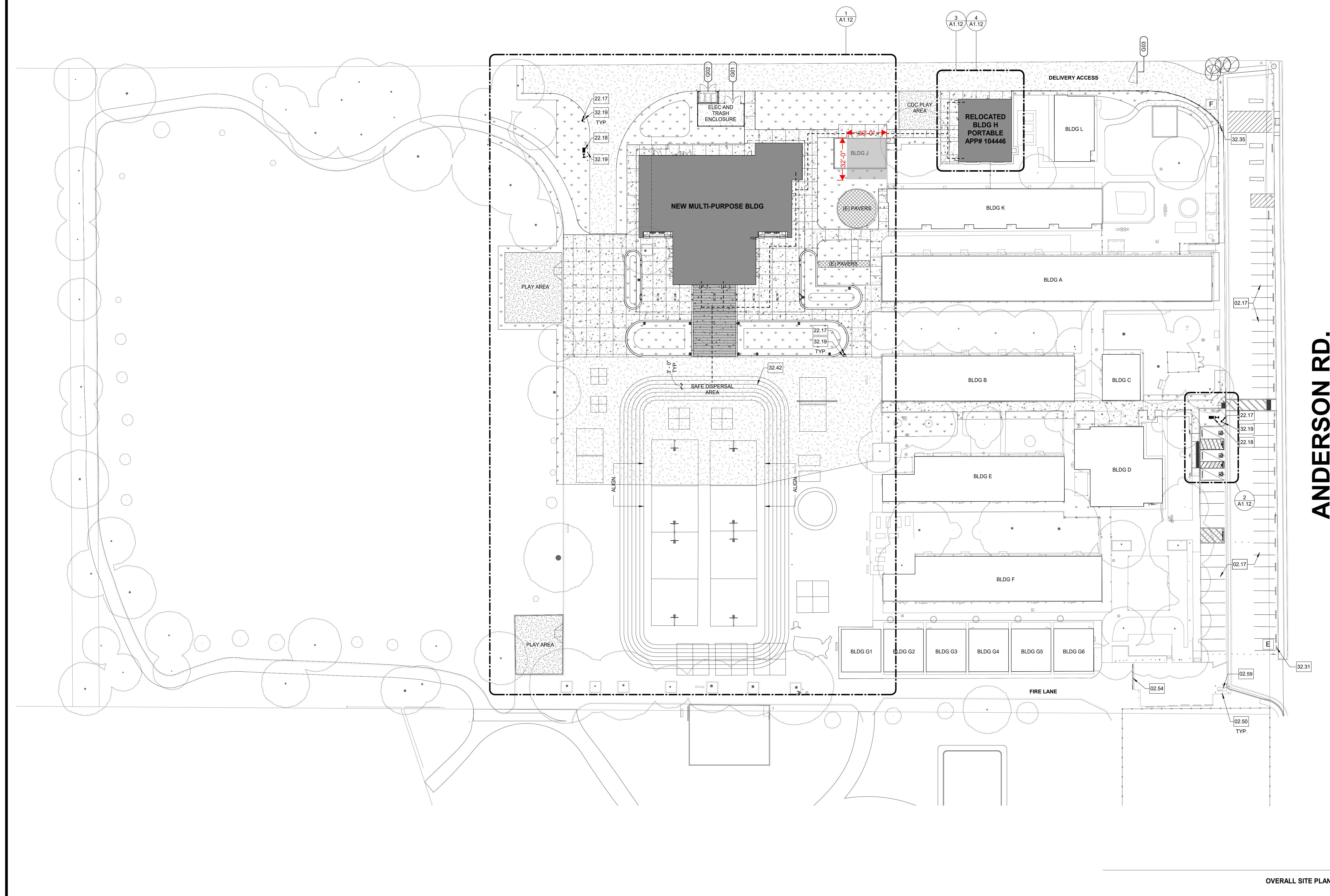
**Sheet:**  
OVERALL SITE PLAN

**CONSTRUCTION DOCUMENTS**

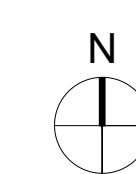
Date: 2021-03-05 Client Project No.: 3447024000

Sheet:

GATE SCHEDULE								LEGEND		
DOOR NUMBER	WIDTH	HEIGHT	MATERIAL	FINISH	PANIC	HARDWARE GROUP	DETAIL	COMMENTS	OM	ORNAMENTAL METAL
G01	12' - 0"	6' - 0"	CL	BPC	No	20	4/A1.32	PRIVACY SLATS	CL	CHAINLINK
G02	12' - 0"	6' - 0"	CL	BPC	No	20	4/A1.32	PRIVACY SLATS	MTL	METAL
G03	15' - 0"	4' - 0"	MTL	PT	No	20	6/A1.12	REMOVEABLE LOCKING POST	FF	FACTORY FINISH
									BPC	BLACK PVC COATED



ANDERSON RD.



OVERALL SITE PLAN **1**  
1" = 30'-0"

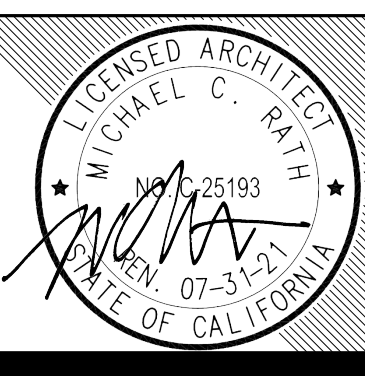
IDENTIFICATION STAMP  
 DIV. OF THE STATE ARCHITECT  
 APP: 02-118738 INC.  
 REVIEWED FOR:  
 SS  FLS  ACS   
 DATE: 03/16/2021



HMC Architects

3447024000

2495 Natomas Park Drive, Studio 100  
 Sacramento, CA 95833  
 T 916 325 1100 / www.hmcarchitects.com



- Keynotes:**
- 03.20 PLAYGROUND CURB RAMP. SEE DETAIL 24/A1.31
  - 03.24 CONCRETE BASE. SEE DETAIL 11/A1.32
  - 10.23 TACTILE EXIT SIGN - EXIT - 10-1/A10.71
  - 10.26 OCCUPANT LOAD SIGN - 7/A10.71
  - 10.38 FIRE EXTINGUISHER. SEE DETAIL 14/A10.72
  - 10.43 ASSISTIVE LISTENING SYSTEM SIGN - 6/A10.71
  - 22.17 FIRE HYDRANT. PROVIDE ASSEMBLY PER CIVIL DWGS
  - 28.11 ILLUMINATED EXIT SIGN W/ INTEGRAL EMERGENCY EGRESS LIGHTING & BACKUP POWER. SEE ELEC DWGS
  - 32.01 COLORED CONCRETE PAVEMENT
  - 32.07 ISA PAVEMENT SYMBOL - 11/A1.31
  - 32.19 PIPE BOLLARD - SEE CIVIL DWGS
  - 32.22 CONCRETE MOW CURB - 10/A1.31
  - 32.25 PAINT FOUR SQUARE COURT - 14/A1.31
  - 32.28 BASKETBALL BACKSTOP - 13/A1.31
  - 32.39 BALL WALL. SEE DETAIL 5/A1.12
  - 32.42 NEW STRIPING TO MATCH EXISTING

- Legend:**
- SCOPE OF WORK
  - (E) BUILDING
  - FIRE LANE
  - (E) SITE CONDITIONS, SEE CIVIL DWGS
  - (N) ASPHALT PAVING, SEE CIVIL DWGS
  - (N) CONCRETE PAVING, SEE CIVIL DWGS
  - (N) LANDSCAPING, SEE LANDSCAPE DWGS
  - PROPERTY LINE
  - PATH OF EGRESS
  - STRUCTURE OVERHEAD
  - PAINTED RED STRIPING/CURB WITH "NO PARKING - FIRE LANE" TEXT
  - VAN ACCESSIBLE PARKING STALL
  - ACCESSIBLE PARKING STALL
  - ACCESSIBLE ROUTE
  - FIRE LANE
  - (E) SIGN, TYP.
  - (E) TRUNCATED DOME
  - (E) ACCESSIBLE PARKING STALLS, DSA APP# 114122, TYP.
  - PARKING AREA
  - AUTHORIZED VEHICLES ONLY
  - ACCESSIBLE STRIPING
  - STUDENT LOADING

- Notes:**
1. REFER TO SHEET 00.11 FOR TYPICAL SYMBOLS AND ABBREVIATIONS
  2. SEE CIVIL PLANS FOR PAVING, STRIPING AND SIGNAGE
  3. SEE A1.11 FOR GATE SCHEDULE

Facility:  
**CESAR CHAVEZ ELEMENTARY SCHOOL**  
 DAVIS JOINT UNIFIED SCHOOL DISTRICT  
 1221 ANDERSON RD, DAVIS, CA 95616

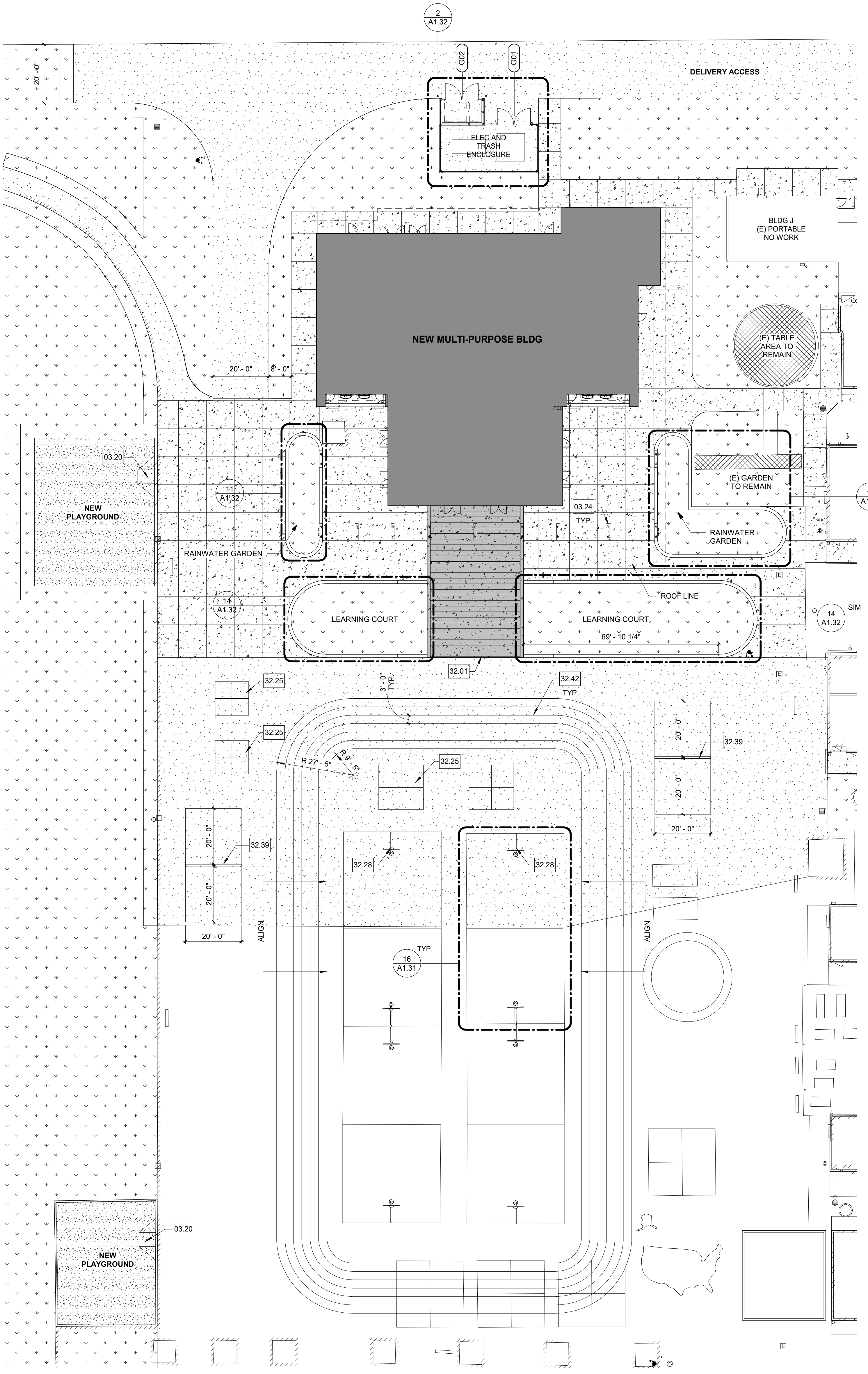
Project:  
**NEW MULTI-PURPOSE BUILDING AT CESAR CHAVEZ ES**

Sheet:  
**ENLARGED SITE PLAN**

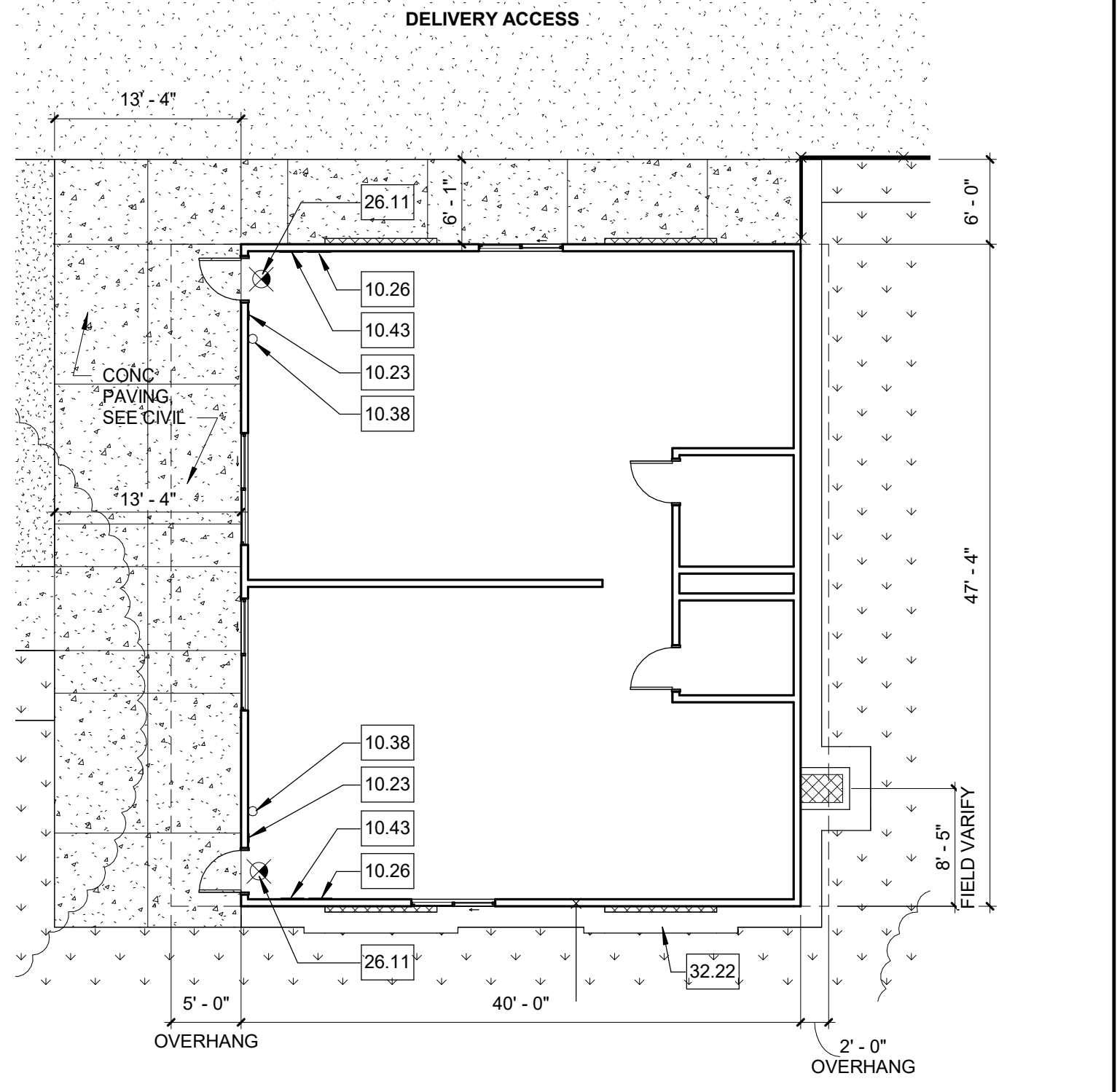
**CONSTRUCTION DOCUMENTS**

Date: 2021-03-05 Client Project No.: 3447024000

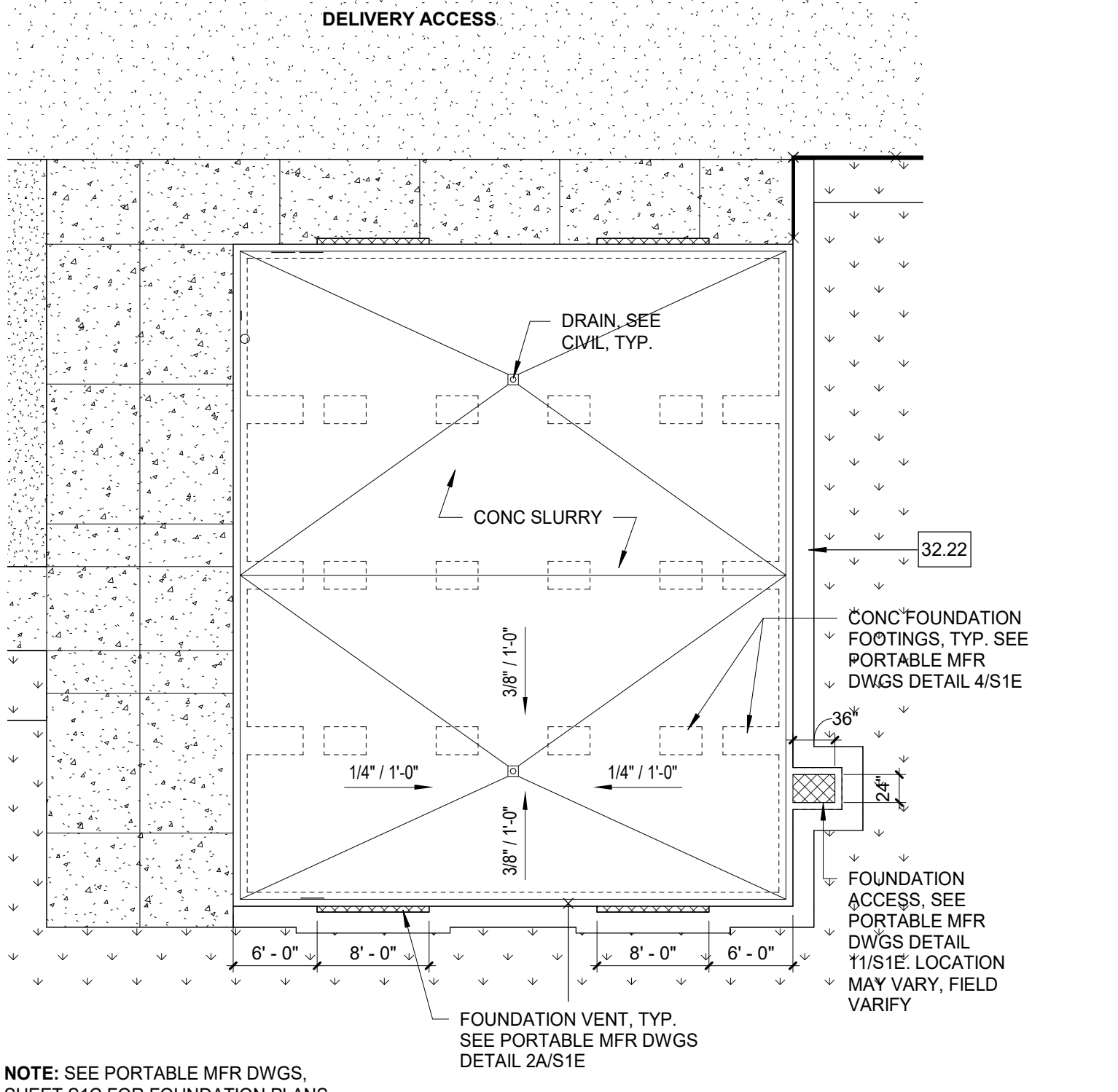
Sheet: **A1.12**



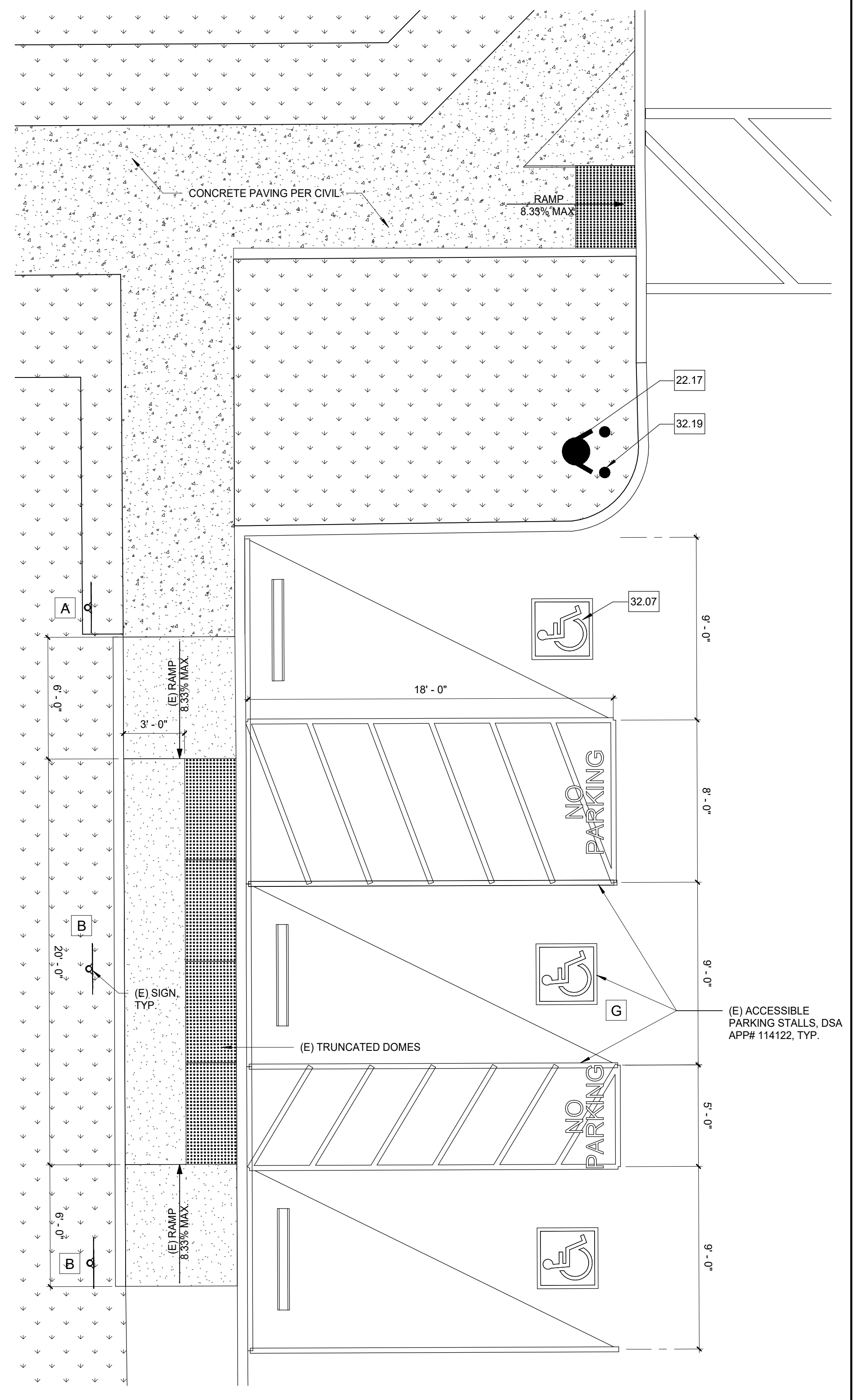
ENLARGED SITE PLAN **1**  
 1" = 20'-0"



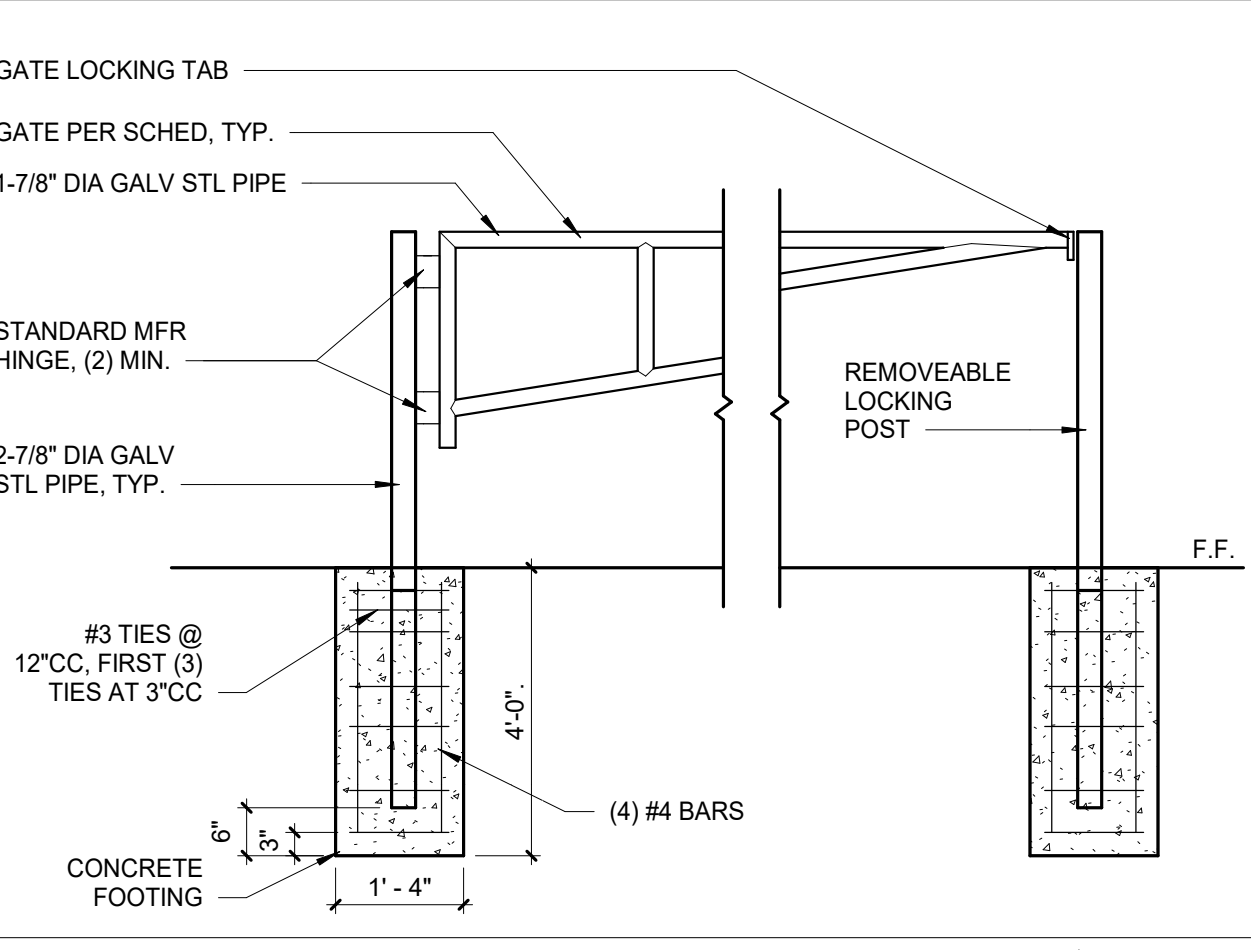
ENLARGED PLAN - RELOCATED PORTABLE **3**  
 1" = 10'-0"



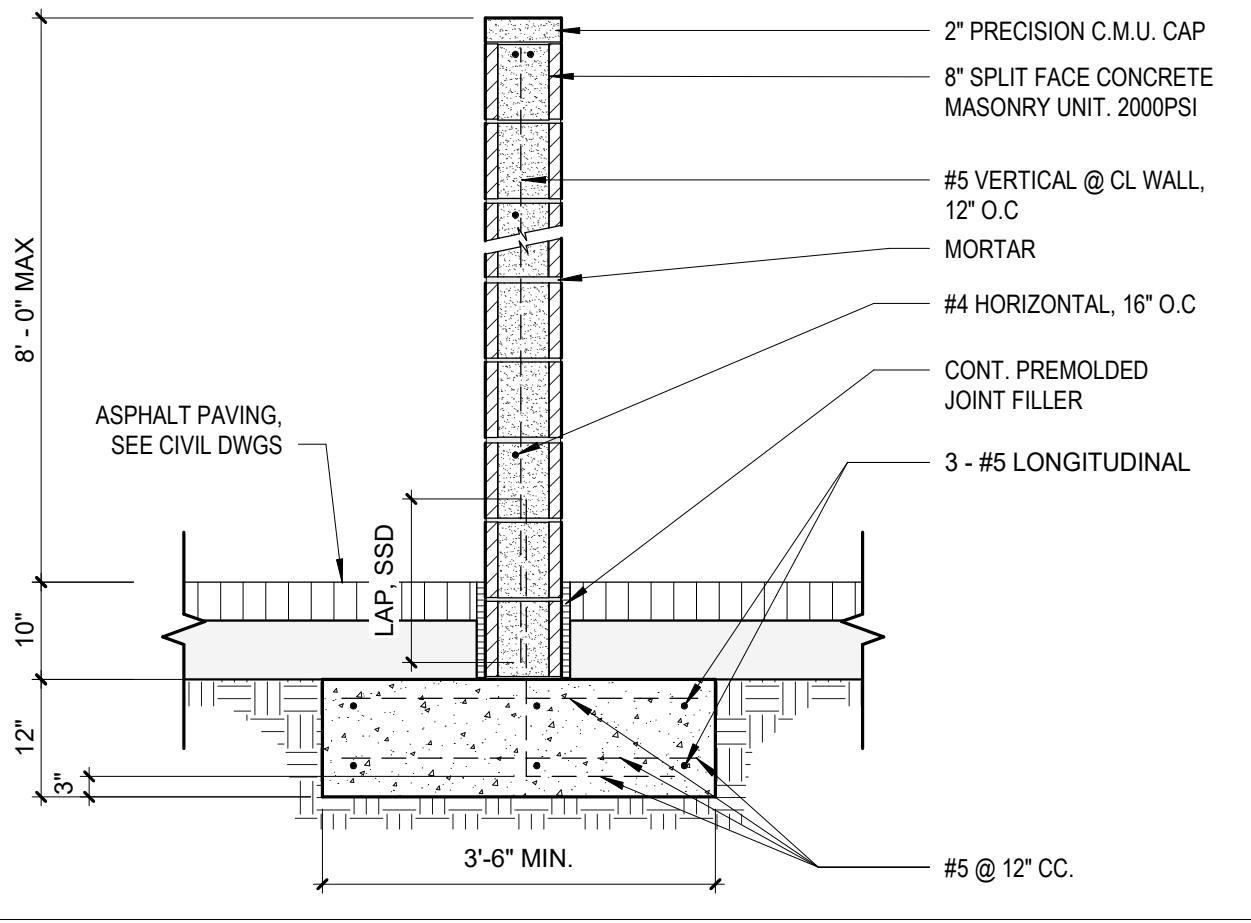
SLAB PLAN - RELOCATED PORTABLE **4**  
 1" = 10'-0"



(E) ACCESSIBLE PARKING **2**  
 1/4" = 1'-0"



Barrier Swing Gate **6**  
 1/2" = 1'-0"



CMU BALL WALL SECTION **5**  
 6" = 1'-0"